



AWA - AFRICA

ACTIVE WOMEN ARISE - AFRICA
AWA - AFRICA

ACTIVE WOMEN ARISE – AFRICA

(AWA - AFRICA)

“Empower. Uplift. Protect”

Organizational Profile **2025**

Catalog

INTRODUCTION	3
VISION	3
MISSION	3
GOAL	3
CORE VALUES	4
BACKGROUND	5
THEMATIC AREAS	6
OBJECTIVES	7
CORE PROGRAMS & INTERVENTIONS	8
ORGANIZATIONAL STRUCTURE & GOVERNANCE	12
PARTNERSHIPS & COLLABORATION	15
GEOGRAPHIC COVERAGE	16
LEGAL STATUS & CONTACT INFORMATION	16

INTRODUCTION

Active Women Arise – Africa (AWA-AFRICA) is a national non-governmental organization (NGO) committed to promoting the rights, dignity, and holistic well-being of women and children in South Sudan. Founded in May 2019 and officially registered with the Relief and Rehabilitation Commission (RRC) on April 28, 2020, AWA-AFRICA was established in direct response to the growing humanitarian and development challenges affecting women and children in communities torn apart by armed conflict, displacement, and chronic poverty.

AWA-AFRICA operates primarily in hard-to-reach and conflict-affected regions, where access to essential services remains limited or non-existent. The organization provides life-saving humanitarian assistance and implements gender-responsive development programs that address urgent needs while building long-term resilience. These include initiatives in gender-based violence (GBV) prevention and response, women's economic empowerment, peacebuilding, sexual and reproductive health, education in emergencies, and climate action.

AWA-AFRICA is rooted in a rights-based, community-led approach that prioritizes the voices and leadership of women, girls, and marginalized groups. Through grassroots mobilization, partnerships with local leaders, and engagement with national stakeholders, the organization ensures that its interventions are inclusive, culturally sensitive, and sustainable.

Driven by a passionate network of volunteers and field-based staff, AWA-AFRICA is dedicated to fostering inclusive development, gender justice, and social transformation in South Sudan. Its programming emphasizes innovation, accountability, and local ownership, enabling the communities it serves to not only survive crises but to recover, grow, and thrive.

VISION

A society where women and children fully enjoy their rights, live in dignity, and thrive in peace and equality.

MISSION

To deliver inclusive humanitarian services in health, education, food security, livelihoods, and essential non-food items to women and children in rural and urban communities, with the goal of restoring their dignity, resilience, and hope.

GOAL

To empower women, youth, and vulnerable communities in South Sudan to live dignified, peaceful, and resilient lives through inclusive humanitarian action, gender-responsive development, and sustainable peacebuilding.

CORE VALUES

At the heart of AWA-AFRICA's work is a strong set of core values that guide our vision, operations, and relationships with communities, partners, and stakeholders. These values reflect our organizational identity and commitment to transformative, inclusive development.

- ✓ **Equity and Inclusion:** We are committed to fairness and non-discrimination in all our actions. We actively work to ensure that women, girls, persons with disabilities, and other marginalized groups have equal access to opportunities, services, and resources.
- ✓ **Compassion:** AWA-AFRICA operates with empathy, kindness, and solidarity. We approach all communities with a deep sense of humanity and a commitment to alleviating suffering, especially in times of crisis.
- ✓ **Integrity:** We hold ourselves to the highest standards of honesty, transparency, and accountability. We manage resources responsibly and strive to earn the trust of our beneficiaries, partners, and donors.
- ✓ **Participation and Empowerment:** We believe that sustainable development begins with the people. We promote meaningful participation of women, youth, and local communities in planning, decision-making, and implementation of programs. We empower communities to shape their own futures.
- ✓ **Resilience:** We are dedicated to helping individuals and communities recover from shocks, adapt to changing conditions, and build stronger, more resilient systems for long-term well-being and development.
- ✓ **Collaboration and Partnership:** AWA-AFRICA values collaboration as a key driver of impact. We believe in working together with civil society, government, communities, and donors so as to amplify our collective reach and results.
- ✓ **Accountability:** We are answerable to the communities we serve, our partners, and our supporters. We uphold open communication, feedback mechanisms, and learning processes to continuously improve our work.
- ✓ **Creativity and Innovation:** We embrace new ideas, locally rooted solutions, and adaptive thinking to solve complex challenges. We encourage innovation that responds to community needs in culturally appropriate ways.
- ✓ **Gender Sensitivity:** We recognize the unique needs, roles, and contributions of women, men, girls, and boys. We mainstream gender considerations in all our programs to promote equality and dismantle barriers to women's empowerment.



AWA-AFRICA Engaging women during an Empowerment Forum in Rubkona, Unity State in May 2024.

BACKGROUND

Active Women Arise Africa (AWA AFRICA) was founded in May 2019 by a committed group of South Sudanese intellectuals, youth leaders, and women activists who were deeply concerned about the worsening humanitarian conditions in the country.

The organization's origin was grounded in a voluntary community-led assessment conducted in conflict-affected areas, which highlighted the dire realities faced by civilians, particularly women and children, in the aftermath of prolonged conflict and political instability.

The survey revealed that widespread violence, displacement, and the breakdown of essential public services had left many communities in a state of acute vulnerability. Regions such as Central Equatoria, Upper Nile, Jonglei, Unity, Eastern Equatoria, and Bahr el Ghazal were found to be severely underserved, with limited or no access to healthcare, education, protection, clean water, and livelihood opportunities. Women and girls were disproportionately affected, enduring the devastating consequences of gender-based violence, early and forced marriages, exploitation, and economic marginalization.

Motivated by these findings and a profound sense of responsibility to serve their communities, the founders established AWA AFRICA to respond to immediate humanitarian needs while laying the groundwork for sustainable development. The organization was officially registered with the Relief and Rehabilitation Commission (RRC) on April 28, 2020, granting it legal recognition to operate as a national non-governmental organization across South Sudan.

AWA AFRICA emerged at a pivotal time in the country's history, shortly after the signing of the Revitalized Agreement on the Resolution of the Conflict in the Republic of South Sudan (RARCSS) in September 2018. The peace deal created a critical opening for civil society to contribute to national healing, reconciliation, and reconstruction. In this transitional context, AWA AFRICA positioned itself as a grassroots movement committed to ensuring that peace dividends reach the most marginalized, particularly women and children.

Since its inception, the organization has embraced a community-centered, gender-responsive, and conflict-sensitive approach. AWA AFRICA works closely with traditional leaders, local authorities, youth and women's groups, and national partners to implement solutions that are context-specific, participatory, and sustainable.

The organization prioritizes local capacity strengthening, community empowerment, and social inclusion to drive lasting transformation. Its dual mandate to provide emergency humanitarian support and to contribute to long-term development reflects a holistic vision of resilience, justice, and dignity for all South Sudanese.

THEMATIC AREAS

AWA-AFRICA's programming is guided by five key thematic pillars:

1. Gender-Based Violence (GBV), Sexual and Reproductive Health Rights (SRHR), and Protection

AWA-AFRICA is deeply committed to advancing the rights, dignity, and safety of women and girls, particularly in contexts affected by conflict, displacement, and poverty. Under this thematic area, the organization addresses the root causes and consequences of GBV through community outreach, survivor-centered services, and advocacy for legal reforms.

AWA-AFRICA also promotes comprehensive Sexual and Reproductive Health Rights (SRHR), ensuring that women and girls can access accurate information, quality healthcare services, and safe spaces to make informed decisions about their bodies and futures.

Protection services are integrated throughout all interventions, with a strong emphasis on psychosocial support, referrals, case management, and community-based protection mechanisms.

2. Women Empowerment and Economic Resilience

Recognizing that economic independence is central to women's empowerment, AWA-AFRICA implements programs that build the capacities of women and girls to become economically self-reliant and socially empowered.

Activities under this thematic area include vocational and life skills training, access to microfinance, mentorship in entrepreneurship, business development support, and the formation of women-led savings and loan groups.

Special attention is given to vulnerable groups such as single mothers, widows, survivors of GBV, and adolescent girls. These initiatives are designed to promote sustainable livelihoods, enhance decision-making power, and break cycles of dependency and poverty.

3. Peacebuilding, Conflict Mitigation, and Social Cohesion

AWA-AFRICA actively contributes to building peaceful and inclusive communities by engaging women and youth in dialogue, mediation, and local peace processes. The organization facilitates community-based conflict resolution forums, intergenerational dialogues, trauma healing sessions, and civic education to address grievances and promote reconciliation.

By empowering women and girls to participate in peacebuilding at all levels from the household to national platforms, AWA-AFRICA strengthens their role as agents of peace and transformation. The organization also works to restore broken community relationships and foster social cohesion among diverse ethnic, cultural, and religious groups.

4. Education in Emergencies and Development

AWA-AFRICA believes that education is a fundamental human right and a powerful tool for gender equality and societal change. The organization supports access to inclusive, quality, and safe education for children and youth, especially girls, in emergency and post-conflict settings. This includes establishing temporary learning spaces, providing school supplies and menstrual hygiene kits, advocating against early and forced marriages, and strengthening community-based education committees.

Beyond emergencies, AWA-AFRICA works to improve long-term educational outcomes through teacher training, gender-sensitive curricula, and support for girls transitioning from primary to secondary and tertiary education.

5. Climate Action and Disaster Risk Reduction (DRR)

Acknowledging the disproportionate impact of climate change and disasters on women and girls, AWA-AFRICA incorporates gender-responsive climate action and disaster risk reduction into its programming. This involves raising community awareness on environmental protection, promoting climate-smart agriculture, and supporting the adoption of clean energy solutions such as solar technologies.

AWA-AFRICA also builds local resilience through early warning systems, emergency preparedness training, and the inclusion of women in decision-making processes related to natural resource management and disaster response planning. By integrating environmental sustainability with community development, the organization fosters resilience in the face of increasing climate and humanitarian shocks.

OBJECTIVES

Key objective:

To improve the quality of life and promote resilience among vulnerable populations in South Sudan through gender-responsive humanitarian and development programming.

Strategic Objectives:

- 1) *To prevent and respond to gender-based violence and strengthen protection systems for women and children.*
- 2) *To promote women's economic empowerment and livelihood resilience through skills development, access to resources, and entrepreneurship support.*
- 3) *To advance access to quality education for children, especially girls, in emergency and post-conflict settings.*
- 4) *Construct and rehabilitate health and educational facilities to improve access to essential services.*
- 5) *Eliminate harmful cultural practices that undermine the rights and safety of women and girls.*
- 6) *Promote gender equality through girl-child education and technical skills training for women.*
- 7) *Provide emergency assistance, especially including shelter, non-food items (NFIs), and livelihoods, especially to conflict-affected communities.*
- 8) *Foster a culture of peace, healing, and reconciliation through community engagement.*
- 9) *Collaborate with government and development actors to address poverty and social exclusion.*
- 10) *Protect children and advocate for their rights across all levels of society.*

CORE PROGRAMS & INTERVENTIONS

AWA AFRICA designs and implements both emergency relief and long-term development programs that are responsive to the evolving needs of conflict-affected communities in South Sudan. All interventions are grounded in a rights-based, gender-sensitive, and community-driven approach.

The organization's core programming areas include:

1. Gender-Based Violence (GBV) Response and Prevention

AWA AFRICA addresses the widespread challenges of GBV through a comprehensive set of prevention and response mechanisms. These include:

- Provision of psychosocial support and trauma counseling for survivors.
- Legal referrals and case management in coordination with protection actors and local authorities.
- Community awareness campaigns aimed at shifting harmful norms and behaviors.
- Establishment of women- and girl-friendly spaces in internally displaced persons (IDP) camps and other displacement-affected settings.
- Engagement of male allies and youth in GBV prevention and positive masculinity initiatives.



2. Health Outreach and Sexual Reproductive Health Rights (SRHR)

To improve access to essential health services, AWA AFRICA delivers targeted outreach focused on maternal and reproductive health. Activities include:

- Antenatal and postnatal care support for mothers and infants.
- SRHR education, including family planning and menstrual hygiene awareness.
- Health awareness sessions on sexually transmitted infections (STIs), HIV/AIDS, and general preventive care.
- Mobile medical clinics serving hard-to-reach communities with limited or no access to health facilities.

3. Education Programs

Education is at the heart of our commitment to rebuild hope and opportunity. The organization works to ensure that all children, especially girls, can access quality learning through:

- Accelerated Learning Programs (ALPs) for out-of-school children and adolescents.
- Rehabilitation and construction of school infrastructure in crisis-affected areas.
- Capacity building of teachers through continuous training and support.
- Distribution of essential scholastic materials e.g textbooks, uniforms, and stationery.
- Back-to-school campaigns to promote school attendance and reduce dropout rates.

4. Women's Economic Empowerment

AWA AFRICA promotes financial independence and livelihood resilience among women and girls by providing the tools and support necessary to generate income and build sustainable businesses. Key interventions include:

- Establishment and mentorship of Village Savings and Loan Associations (VSLAs).
- Delivery of technical and vocational skills training such as tailoring, baking, and agribusiness.
- Support for women-led small enterprises and startups.
- Provision of microgrants and business development services to enhance market participation

5. Peacebuilding and Social Cohesion

As part of its mandate to contribute to a peaceful South Sudan, AWA AFRICA actively engages communities in conflict resolution and peacebuilding processes. This is achieved through:

- Facilitation of grassroots peace dialogues involving youth, women, elders, and traditional leaders.
- Trauma healing and reconciliation workshops for conflict-affected individuals and groups.
- Youth engagement in peace initiatives, including civic education and leadership training.
- Promotion of inter-communal cooperation and harmony through cultural exchanges and joint community projects

6. Climate Resilience and Environmental Protection

In response to the growing impacts of climate change and environmental degradation, AWA AFRICA supports communities to adopt climate-smart and sustainable practices. These efforts include:

- Training farmers on climate-resilient and sustainable agriculture techniques.
- Community tree-planting campaigns to restore degraded environments and promote reforestation.
- Disaster preparedness and early warning systems to enhance community resilience to floods and droughts.
- Promotion of clean and renewable energy alternatives, such as solar lighting and fuel-efficient stoves.

KEY ACHIEVEMENTS & IMPACT POTENTIAL

Since its establishment, AWA-AFRICA has made notable strides in addressing the urgent needs of vulnerable populations, particularly women and children, across South Sudan. While still in its growth phase, the organization has demonstrated a strong capacity to implement high-impact interventions that contribute to humanitarian relief, women's empowerment, peacebuilding, and long-term development.

1. Expanding Access to Health and Education Services

AWA-AFRICA has reached over 10,000 beneficiaries with critical health and education services since its inception. Through mobile outreach programs, awareness campaigns, and targeted support for underserved areas, the organization has helped communities improve access to basic healthcare, maternal and child health services, and educational opportunities for children affected by conflict and displacement.

2. Strengthening GBV Response and Protection Mechanisms

More than 800 women and girls have received support through AWA-AFRICA's gender-based violence (GBV) prevention and response programs. The organization provides a range of services including psychosocial support, legal referrals, individual case management, and the distribution of dignity kits. It has also established safe and women-friendly spaces in displacement settings to offer survivors protection and care in a secure and supportive environment.

3. Emergency Response in Humanitarian Crises

AWA-AFRICA has played a vital role in four major humanitarian emergencies in Upper Nile and Jonglei States. In these crises, the organization delivered life-saving support through the provision of non-food items (NFIs), emergency shelter materials, basic hygiene supplies, and protection services to internally displaced persons and other crisis-affected communities.

4. Promoting Peace and Social Cohesion

In its commitment to peacebuilding, AWA-AFRICA has formed and mobilized active networks of women and youth leaders who engage in grassroots peace dialogues and trauma healing initiatives. These efforts have contributed to conflict mitigation and the promotion of social cohesion in fragile communities by amplifying local voices and fostering inclusive participation in peace processes.

5. Advancing Women's Economic Empowerment

To promote resilience and self-reliance, AWA-AFRICA has trained 200+ women in technical and vocational skills including tailoring, soap-making, baking, and small-scale entrepreneurship. These trainings have enabled women to generate income, support their families, and reduce dependence on humanitarian assistance.

6. Increasing Financial Inclusion through Village Savings and Loan Associations (VSLAs)

The organization has facilitated the formation of multiple VSLAs to support women's access to finance in rural areas. These savings groups have become a vital mechanism for building financial independence, encouraging local investment, and fostering solidarity among women at the grassroots level.

Scaling for Greater Impact

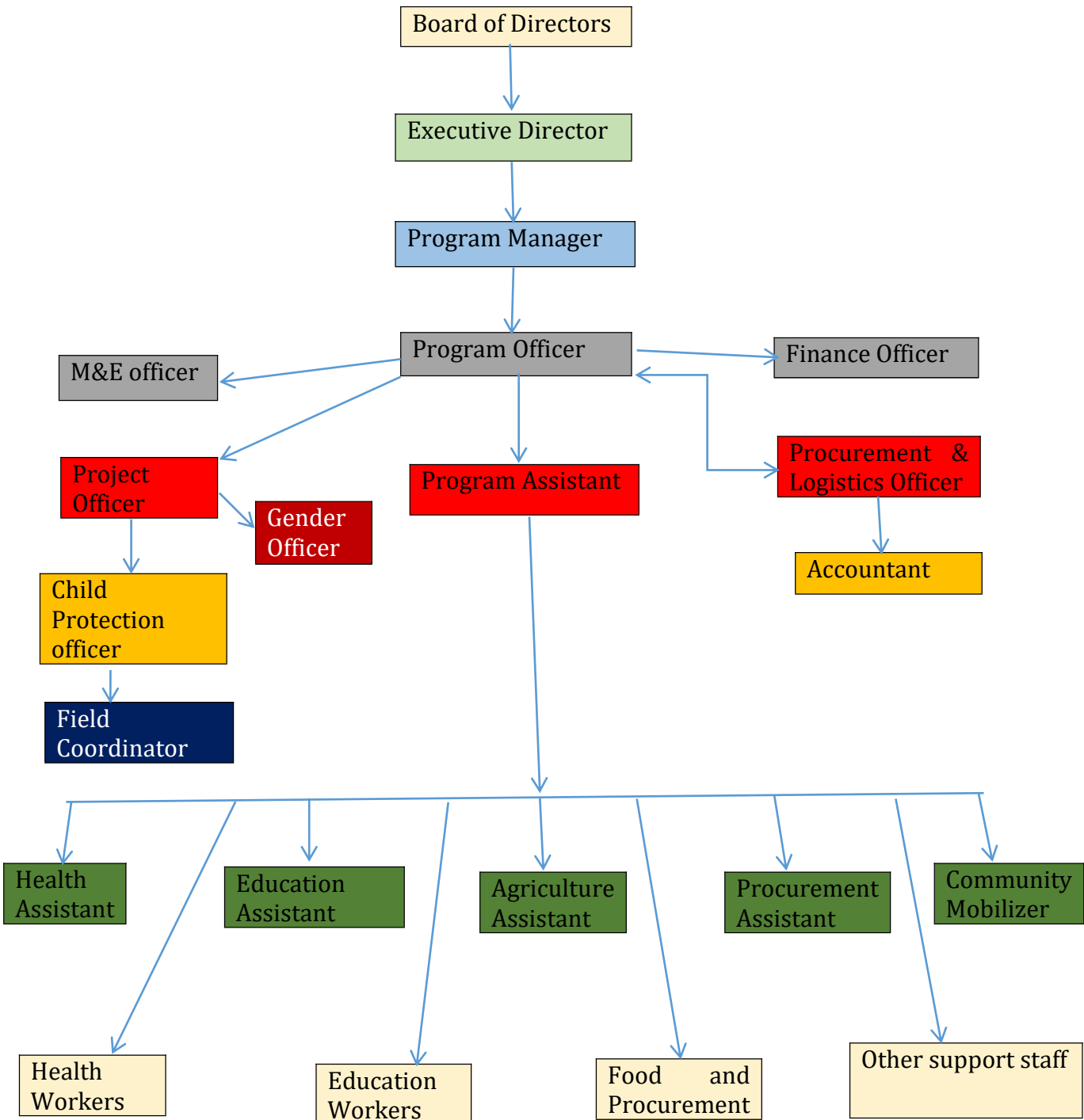
Looking to the future, AWA-AFRICA is committed to deepening its impact and expanding its operations to reach more underserved communities. Key strategic priorities include:

- ✓ *Strengthening institutional capacity to manage larger programs and donor partnerships*
- ✓ *Enhancing resource mobilization to secure sustainable funding for long-term impact*
- ✓ *Forging technical and strategic partnerships with NGOs, UN agencies, government institutions, and community structures*
- ✓ *Investing in community-led, gender-responsive, and conflict-sensitive programming to ensure inclusive and locally owned solutions*

Through these efforts, AWA-AFRICA aims to become a leading voice and actor in advancing the rights, dignity, and well-being of women and children in South Sudan.

ORGANIZATIONAL STRUCTURE & GOVERNANCE

AWA-AFRICA is structured to promote accountability, inclusivity, and efficiency in program implementation and decision-making. The structure includes a governing board, a management team, technical program staff, and field-level personnel supported by a strong network of community volunteers.



A. Governance: Board of Directors

The Board of Directors provides strategic guidance, policy oversight, and resource mobilization support. It ensures that AWA-AFRICA stays aligned with its mission and operates with transparency and integrity. The board comprises five key members:

1. Chairperson

- Leads the board and ensures effective governance.
- Oversees board meetings, supports the Executive Director, and represents the board externally.

2. Deputy Chairperson

- Supports the Chairperson and steps in when the Chair is unavailable.
- Often leads specific committees (e.g, programs or partnerships).

3. Secretary

- Maintains records of board decisions and ensures legal compliance.
- Coordinates board communications and documentation.

4. Treasurer

- Provides financial oversight and ensures accountability in budgeting, audits, and reporting.
- Works closely with the Finance Officer (management team) to review financial health.

5. Board Member (Gender and Advocacy)

- Brings expertise in gender equality, women's rights, and advocacy strategies.
- Advises on GBV, SRHR, and policy engagement.

6. Organizational Development Advisor

- Offers guidance on strategic planning, institutional growth, and sustainability.
- May be non-voting but influential in organizational development.

The Board meets quarterly and during major programmatic decisions or strategic reviews.

B. Executive Leadership

The Executive Director leads the organization and serves as the link between the Board and the operational staff. The Executive Director is responsible for overall strategic leadership, representation, partnership development, and organizational sustainability.

C. Program Management & Support Team

Reporting to the Executive Director, this team oversees project design, delivery, budgeting, reporting, and compliance. Key positions include:

- Program Manager – Oversees sectoral programs and supervises technical staff.
- Field Coordinator – Supports operational planning and coordination at field level.
- Monitoring & Evaluation (M&E) Officer – Leads program monitoring, data analysis, and reporting.
- Finance Officer – Handles budgeting, financial tracking, and donor compliance.
- Procurement & Logistics Officer – Manages supply chains, inventory, and logistics.

D. Program & Technical Officers

These officers and assistants provide thematic support and technical leadership across AWA-AFRICA's core areas:

- Gender Officer
- Child Protection Officer
- Health Assistants & Health Workers
- Education Assistants & Education Workers
- Agriculture Assistant
- Project Officers
- Program Officers
- Program Assistants

They are responsible for planning, implementation, community engagement, and coordination within their areas of expertise.

E. Community-Level Staff & Volunteers

At the grassroots level, AWA-AFRICA's interventions are supported by:

- Community Mobilizers
- Volunteers
- Support Staff (including Food Distribution and Logistics Teams)

These individuals ensure last-mile delivery of services, support community engagement and feedback collection, and help maintain consistent field presence even in hard-to-reach areas.

PARTNERSHIPS & COLLABORATION

AWA-AFRICA recognizes that meaningful and sustainable impact is best achieved through collaboration with a broad range of stakeholders at different levels. While still in the early stages of formal partnerships with international actors, the organization has built strong ties with local authorities and community leaders who play a critical role in supporting and facilitating its programs.

1. Government Engagement

AWA-AFRICA maintains active communication and cooperation with key government bodies, particularly the *Ministry of Gender, Child and Social Welfare*, which oversees policies and programs related to women, children, and social services. This ensures that AWA-AFRICA's work aligns with national development strategies, facilitates access to state resources and services, and supports advocacy for policy reforms that advance the rights and protection of vulnerable groups.

2. Local Authorities and Community Leaders

AWA-AFRICA actively collaborates with *local government officials, community elders, religious leaders, youth representatives, and women leaders*. These partners are essential in ensuring community acceptance, promoting participatory approaches, and enhancing the protection and inclusion of vulnerable groups. Their roles include mobilizing communities, supporting conflict resolution efforts, and championing women's and children's rights at the grassroots level.

3. Volunteers

Volunteers form the backbone of AWA-AFRICA's outreach and program delivery. They serve as vital connectors between the organization and communities, facilitating awareness campaigns, supporting case management in GBV response, and assisting with data collection and monitoring. The volunteer-driven model enables AWA-AFRICA to maintain close community ties and respond flexibly to emerging needs.

4. Humanitarian and Development Clusters

AWA-AFRICA participates in relevant humanitarian and development clusters and forums at the state and national levels. These platforms provide opportunities for coordination, information sharing, and joint planning with other NGOs, UN agencies, and government actors working in similar sectors.

5. Future Aspirations for Strategic Partnerships

The organization is actively pursuing further partnerships with United Nations agencies, international NGOs, and development actors. These future collaborations aim to enhance technical capacity, secure funding, and broaden the scale and quality of AWA-AFRICA's interventions.

GEOGRAPHIC COVERAGE

AWA AFRICA implements its programs across several conflict-affected, underserved, and hard-to-reach regions of South Sudan. The organization prioritizes areas with high levels of humanitarian need, displacement, and vulnerability among women and children.

Key areas of operation include:

- **Central Equatoria** (including Juba and Yei counties)
- **Upper Nile State** (notably Malakal, Maban, Ulang, and Nasir)
- **Jonglei State** (including Bor, Fangak and Akobo)
- **Unity State** (Rubkona)
- **Eastern Equatoria**
- **Nothern Bahr el Ghazal** (notably Aweil North and Aweil West)



Through its field presence and partnerships with local actors, AWA AFRICA maintains strong community linkages and operational flexibility, enabling timely response in both stable and emergency settings.

The organization is continuously expanding its footprint to new locations based on emerging needs, access opportunities, and strategic partnerships.

LEGAL STATUS & CONTACT INFORMATION

AWA AFRICA is officially registered with the Relief and Rehabilitation Commission (RRC) of South Sudan as a national non-governmental organization. The organization was granted legal status on April 28, 2020, with a mandate to operate across the country.

Head Office Location: Plot No: 027, Block B, 3rd Class Munuki, Juba, South Sudan

Contact Email: activewomenariseafrica@gmail.com

Phone: +211 922 350 008 / +211 915 599 132

AWA AFRICA adheres to all legal, financial, and ethical obligations under South Sudanese law and is committed to transparency, accountability, and collaboration with partners, government agencies, and communities.